



Table of Contents **Page**

Incandescent Lampholders

Porcelain and Plastic N-2

Fluorescent Lampholders

Medium Bi-Pin and Slimline N-2

Recessed Double Contact and Snap-In Quickwire N-3

Lampholder Accessories

Incandescent Lampholders and Adapters N-5

Lamp Switches and Snap-in Receptacles N-5

Fluorescent Starters N-6

Technical Information N-6



Lampholders, Starters and Adapters



Incandescent Lampholders



Incandescent Lampholders:

- 2 or 4 screw termination allows for quick feed through
- 6 inch pigtail accommodates twist on wire connectors

Fluorescent Lampholders:

- Thermoplastic construction available for HO (High Output), slimline, or Bi-pin types

Porcelain Lampholders



| Catalog Number | RL8804 | RL8806 | RL8812 | RL8816 | RL8822 |
|----------------|-----------------------------------|---------------------------------|--------------------------------------|------------------------------------|--|
| Description | Keyless, white, 4 terminal screws | Keyless, white, 6 inch pigtails | Pull chain, white, 2 terminal screws | Pull chain, white, 6 inch pigtails | Pull chain with receptacle, white, 2 terminal screws |
| Rating | 660W 250V | 660W 250V | 660W 250V | 660W 250V | 660W 125V, 15A 125V, NEMA 5-15R |

Plastic Lampholders



| Catalog Number | RL8504 | RL8506 | RL8512 | RL8516 |
|----------------|-----------------------------------|---------------------------------|--------------------------------------|------------------------------------|
| Description | Keyless, white, 4 terminal screws | Keyless, white, 6 inch pigtails | Pull chain, white, 2 terminal screws | Pull chain, white, 6 inch pigtails |
| Rating | 660W 600V | 660W 600V | 660W 250V | 660W 250V |

Incandescent Brass Lampholders



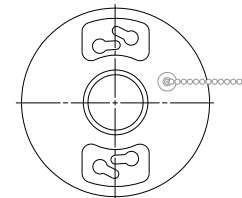
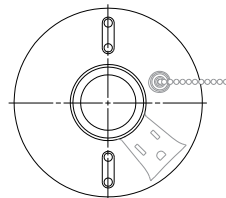
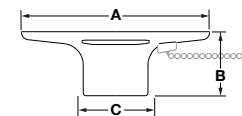
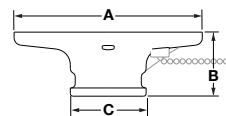
| Catalog Number | RL101* | RL102* | RL105* | RL106* | RL100** |
|----------------|-------------------|------------------|--------------|------------|----------------|
| Description | Turn knob, single | Turn knob, 3-way | Push through | Pull chain | Keyless, brass |
| Rating | 250W 250V | 250W 250V | 660W 250V | 660W 250V | 660W 250V |

Note: *UL and cUL. **UL and CSA.

Product Dimensions Inches (mm)

| Porcelain | RL8804 | RL8806 | RL8812 | RL8816 | RL8822 |
|-----------|---------------|---------------|---------------|---------------|---------------|
| A | 4.35" (110.5) | 4.35" (110.5) | 4.55" (115.6) | 4.55" (115.6) | 4.55" (115.6) |
| B | 1.50" (38.1) | 1.50" (38.1) | 1.55" (39.4) | 1.55" (39.4) | 1.55" (39.4) |
| C | 1.84" (46.7) | 1.84" (46.7) | 1.84" (46.7) | 1.84" (46.7) | 1.84" (46.7) |

| Plastic | RL8504 | RL8506 | RL8512 | RL8516 |
|---------|---------------|---------------|---------------|---------------|
| A | 4.55" (115.6) | 4.55" (115.6) | 4.55" (115.6) | 4.55" (115.6) |
| B | 1.55" (39.4) | 1.55" (39.4) | 1.55" (39.4) | 1.55" (39.4) |
| C | 1.57" (39.9) | 1.57" (39.9) | 1.57" (39.9) | 1.57" (39.9) |



Porcelain

Plastic

Lampholders, Starters and Adapters

Fluorescent Lampholders



Compact Fluorescent Lampholders



| Catalog Number | RL479HSM | RL413HSI | RL413HSM | RL426G24 | RL42G11HSM | RL42G11H9 | RL42G11C |
|----------------|------------------------|---------------------|------------------------|------------------------|------------------------|-----------------------|--------------------------------|
| Description | G23 base | GX23 base | GX23 base | G24Q-3, GX24Q-4 | 2G11 base, 4 pin | 2G11 base, 4 pin | Clip for 2G11 lampholders base |
| Lamp Type | 5W, 7W, 9W | 13W | 13W | 26-32W | 18-55W | 18-55W | |
| Rating | 75W 600V | 75W 600V | 75W 600V | 75W 600V | 75W 600V | 75W 600V | |
| Mounting | Horizontal, screw-down | Horizontal, snap-in | Horizontal, screw-down | Horizontal, screw-down | Horizontal, screw-down | Vertical 90°, snap-in | Adjustable, snap-in |

High Output Fluorescent Lampholders



| Catalog Number | RL305* | RL306* | RL307 | RL308 | RL356 | RL357 |
|----------------|--------------------------------------|--------------------------------------|--------------------------------------|--------------------------------------|--|--|
| Description | Plunger | Fixed | Plunger | Fixed | Plunger | Fixed |
| Lamp Type | Horizontal - Recessed double contact | Horizontal - Recessed double contact | Horizontal - Recessed double contact | Horizontal - Recessed double contact | Vertical - Power groove & jacketed lamps | Vertical - Power groove & jacketed lamps |
| Rating | 660W 600V | 660W 600V | 660W 600V | 660W 600V | 660W 600V | 660W 600V |
| Mounting | Pedestal, slide-on | Pedestal, slide-on | Slide-on, snap-in | Slide-on, snap-in | Slide-on, snap-in | Slide-on, snap-in |

Medium Bi-Pin Fluorescent Lampholders - T8 and T12



Slimline Type Fluorescent Lampholder



| Catalog Number | RL320 | RL325 | RL325B |
|----------------|---------------------------------------|---------------------------------------|----------------------|
| Description | Disconnect, 4-wire | Disconnect, 4-wire | Shunted, 2-wire |
| Lamp Type | Bi-pin/tall profile | Bi-pin/low profile | Bi-pin/low profile |
| Rating | 660W 600V | 660W 600V | 660W 600V |
| Mounting | Slide-on and snap-in with captive nut | Slide-on and snap-in with captive nut | Slide-on and snap-in |

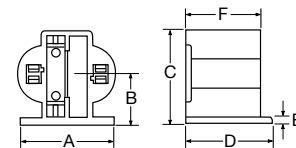


| Catalog Number | RL310* | RL311* |
|----------------|----------------------|----------------------|
| Description | Plunger | Fixed |
| Lamp Type | Single pin | Single pin |
| Rating | 660W 600V | 660W 600V |
| Mounting | Slide-on and snap-in | Slide-on and snap-in |

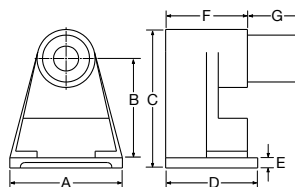
Note: *UL and cUL.

Product Dimensions Inches (mm)

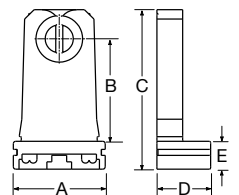
| | RL479HSM | RL413HSI | RL413HSM | RL426G24 | RL42G11HSM | RL42G11H9 |
|---|--------------|--------------|--------------|--------------|--------------|--------------|
| A | 1.28" (32.5) | 0.77" (19.5) | 1.28" (32.5) | 1.31" (33.3) | 1.83" (46.5) | 1.32" (33.5) |
| B | 0.69" (17.5) | 0.69" (17.5) | 0.69" (17.5) | 1.13" (28.7) | 0.83" (21.0) | 1.14" (29.0) |
| C | 1.28" (32.5) | 1.28" (32.5) | 1.28" (32.5) | 1.54" (39.1) | — | 1.92" (48.7) |
| D | 1.28" (32.5) | 1.35" (34.3) | 1.16" (29.5) | — | 0.94" (24.0) | — |
| E | 0.09" (2.3) | — | 0.09" (2.3) | 0.16" (4.0) | — | 0.16" (4.0) |



| | RL305 | RL306 | RL310 | RL311 |
|---|--------------|--------------|--------------|--------------|
| A | 1.45" (36.8) | 1.45" (36.8) | 1.54" (39.1) | 1.31" (33.3) |
| B | 1.20" (30.5) | 1.20" (30.5) | 1.50" (38.1) | 1.13" (28.7) |
| C | 1.90" (48.3) | 1.90" (48.3) | 1.90" (48.3) | 1.54" (39.1) |
| D | 1.26" (32.0) | 1.26" (32.0) | — | — |
| E | 0.14" (3.6) | 0.14" (3.6) | 0.14" (3.6) | 0.16" (4.1) |
| F | 1.12" (28.4) | 1.12" (28.4) | 0.75" (19.1) | 1.20" (30.5) |
| G | 0.75" (19.1) | — | 1.12" (28.4) | — |



| | RL320 | RL325/B |
|---|--------------|--------------|
| A | 1.23" (31.2) | 1.23" (31.2) |
| B | 1.75" (44.5) | 1.28" (32.5) |
| C | 2.14" (54.4) | 1.65" (41.9) |
| D | — | 0.70" (17.8) |
| E | 0.38" (9.7) | 0.37" (9.4) |



Lampholders, Starters and Adapters



Incandescent Lampholders

HID Incandescent Lampholders, Porcelain Keyless



| Catalog Number | RL4221* | RL5221 | RL3742 | 3743R |
|----------------|----------------------------------|----------------------------|--|-----------------------------------|
| Description | Mogul base | Mogul base | Medium base prefocus, porcelain, white | Medium base, thermoplastic, black |
| Lamp Type | E39 socket | EX39 socket | Bayonet socket | Bayonet HID socket |
| Rating | 1500W 600V Max, 4KV or 5KV PULSE | 1500W 600V Max, 5KV PULSE | 1200W 250V | 1000W 250V |
| Mounting | Screw mount, 12 inch leads | Screw mount, 12 inch leads | Screw mount | Screw mount |

Note: *UL Listed, CSA Certified.

Straight Body, Porcelain Keyless



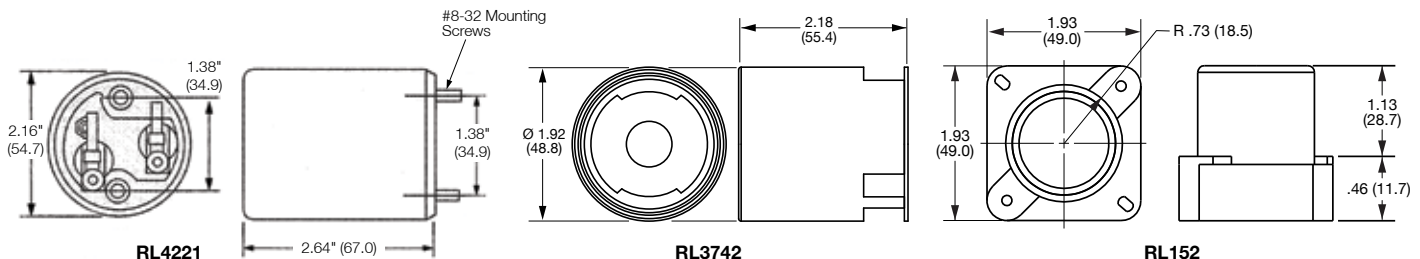
| Catalog Number | RL162 | RL156 | RL157 | RL160 | RL158 | RL159 |
|----------------|------------------------------|----------------------------|-------------------------------|-----------------------------------|----------------------------|----------------------------|
| Description | Medium base | Medium base | Medium base | Medium base | Medium base, low profile | Medium base, shallow base |
| Lamp Type | E26 socket | E26 socket | E26 socket | E26 socket | E26 socket | E26 socket |
| Rating | 660W 250V | 660W 250V | 660W 250V | 660W 250V | 660W 250V | 660W 250V |
| Mounting | Screw mount, screw terminals | Screw mount, 12 inch leads | NPSF1/8 hickey with terminals | NPSF1/8 hickey with 12 inch leads | Front panel mount, snap-in | Front panel mount, snap-in |

Surface and Sign Mount, Medium Base



| Catalog Number | RL152 | RL153 | RL161 | RL163 | RL164 |
|----------------|------------------------------------|---|------------------------|--------------------------------|------------------------------------|
| Description | Medium base, porcelain, pony cleat | Medium Base, plastic, black, pony cleat | Medium base, porcelain | Medium base, porcelain | Medium base, porcelain |
| Lamp Type | E26 socket | E26 socket | E26 socket | E26 socket | E26 socket |
| Rating | 660W 250V | 660W 250V | 660W 250V | 660W,250V | 660W 250V |
| Mounting | 1 piece, surface mount | 1 piece, surface mount | 2 piece, surface mount | 2 piece, sign mount with leads | 2 piece, sign mount with terminals |

Product Dimensions Inches (mm)



Lampholders, Starters and Adapters

Lampholder Accessories



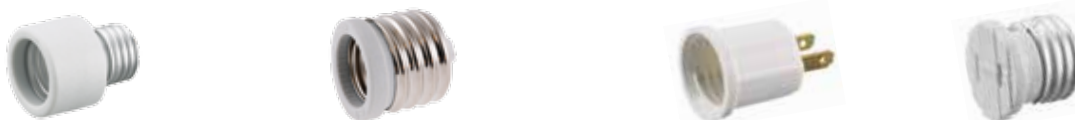
Incandescent Lampholders, Medium Base



| Catalog Number | RL124* | RL124H | RL202 |
|----------------|--|--|---|
| Description | Pigtail medium base socket with 6 inch leads, rubber with #18 gauge wire | Phenolic medium base socket with hook, insulation piercing termination | Medium lampholder to lampholder adapter, pull chain with two 2-prong outlets without ground |
| Rating | 660W 250V | 660W 250V | 660W 125V 15A 125V |

Note: *cCSAus Certified only.

Incandescent Adapters, Medium Base



| Catalog Number | RL150 | RL154 | RL200 | RL201 |
|----------------|--|---|---|---|
| Description | Medium to medium base extension, screw-in, E26 to E26 socket | Mogul to medium base adapter, screw-in, E39 to E26 socket | Outlet adapter, 2-prong plug to medium lampholder | Medium lampholder adapter, medium lampholder to outlet without ground |
| Rating | 250W 250V | 660W 250V | 15A 660W 125V, 15A 125V, NEMA 1-15R | 15A 125V, NEMA 1-15R |

Lamp Switches



| Catalog Number | RL120 | RL121 | RL122 | RL125 |
|----------------|---|-------------------------------------|---------------------------------|-------------------------------------|
| Description | Pull chain switch, 2 circuit, L1/L2/L1+L2/OFF | Pull chain switch, SPST ON/OFF | Pull chain switch, L1/L2/L3/OFF | Rotary switch, SPST ON/OFF |
| Rating | 6A 125V AC, 3A 250V AC, 3A 125V "L" | 6A 125V AC, 3A 250V AC, 3A 125V "L" | 6A 125V AC, 3A 250V AC | 6A 125V AC, 3A 250V AC, 3A 125V "L" |

Note: 6 inch wire leads are #18 AWG AWM/TEW 105°C 600V.

Snap-in Receptacles



| Catalog Number | RR374 | RR374W |
|----------------|-----------------------------|-----------------------------|
| Description | Single receptacle, black | Single receptacle, white |
| Rating | 15A 125V, 3-wire NEMA 5-15R | 15A 125V, 3-wire NEMA 5-15R |

- Accommodate panel thickness of .031 to .062 inch (0.7 to 1.5 mm)
- Panel cutout .95 x .95 inch (24.1 x 24.1 mm)
- #14 AWG 6 inch AWM/TEW FT1 105°C 600V on black and white leads
- #14 AWG 6 inch AWM/TEW FT1 600V on green lead



Fluorescent Starters, Standard Type



| Catalog Number | FS2A | FS4A | FS5A | FS25A |
|----------------|---------------|---------------|------------|-------|
| Number of Pins | 2 | 2 | 2 | 2 |
| Lamp Watts | 14, 15 and 20 | 13, 30 and 40 | 4, 6 and 8 | 25 |



Technical Information

RL5221 HID Incandescent Lampholder

RL426G24 Compact Fluorescent Lampholder

Specification

Rating 1500W 600V Max, 5KV Pulse

Specification

Rating 26-32W lamp type, 75W 600V

Mechanical

Material Glazed porcelain body with ceramic arc shield
Screw shell: Brass with nickel plate

Mechanical

Material High Strength Polycarbonate

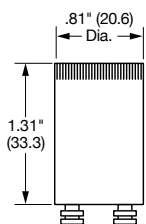
Terminal Accommodation

Wire leads: #14 AWG SF-2 (SEW-2) 200°C, 600V glass braid, 12 inch long, stripped 1/2 inch wire. Mogul Base EX39 lampholder used with ANSI type "o" metal halide lamps, open-rated protected lamps, for use in open or enclosed luminaires. "EX" style exclusionary base designed specifically for operation with protected sockets.

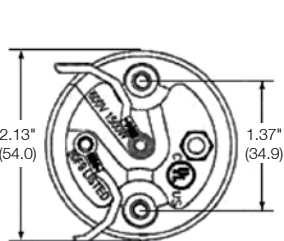
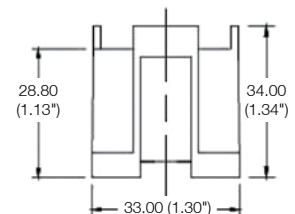
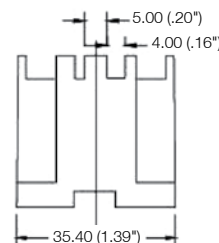
Terminal Accommodation

Suitable as G24Q-3 or GX24Q4 type base, horizontal mount, screw down. Push-in wire terminals for #18 AWG solid or twist and tin stripped 7/16 inch wire. Maximum 6.5 inch lbs conductor insertion force. Wiring port accepts 2 wires for harness wiring.

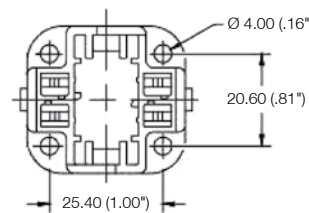
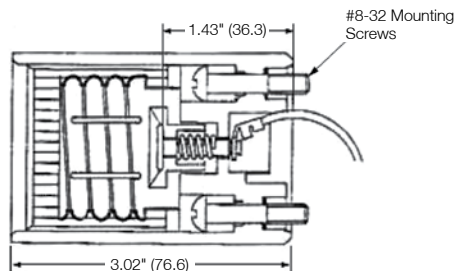
Product Dimensions Inches (mm)



Fluorescent Starters



RL5221



RL426G24